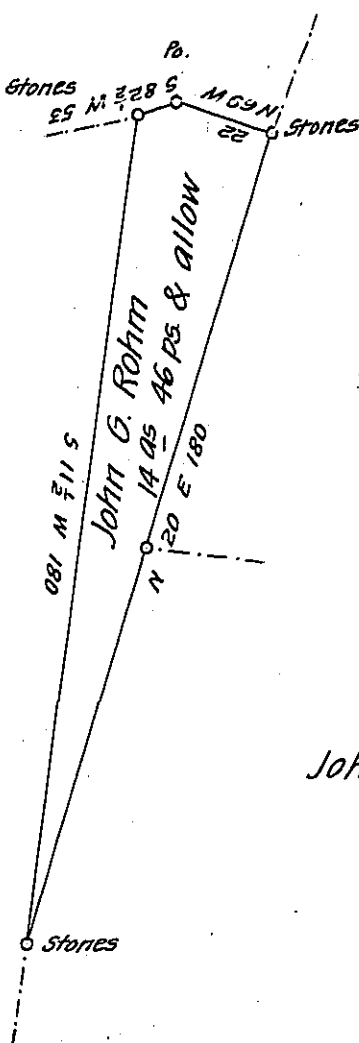


John G. Rohm  
in Right of  
Harrison Barton



L. A. Carpenter

John Kerns

A draft of a tract of land situate on the West Side of 5 Rayshill in East Providence Township Bedford County Containing 14 Acres 46 perches and the usual allowance of six per cent for Roads. Surveyed the 10<sup>th</sup> day of Dec. 1867. In pursuance of a warrant granted to John G. Rohm dated 6<sup>th</sup> day of Dec. A.D. 1867. Examined approved and Certified from the Records of the County Surveyor-office  
 Jany 5<sup>th</sup> 1869

Saml. Ketterman C.S.

To J. M. Campbell Esqr.

S. G.

IN TESTIMONY that the above is a copy of the original remaining on file in the Department of Internal Affairs of Pennsylvania, made conformably to an Act of Assembly approved the 16th day of February, 1833, I have hereunto set my Hand and caused the Seal of said Department to be affixed at Harrisburg, this second day of November 1906

*Isaac Brown*  
 Secretary of Internal Affairs.